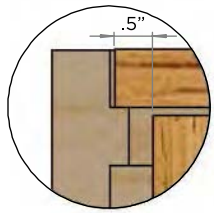
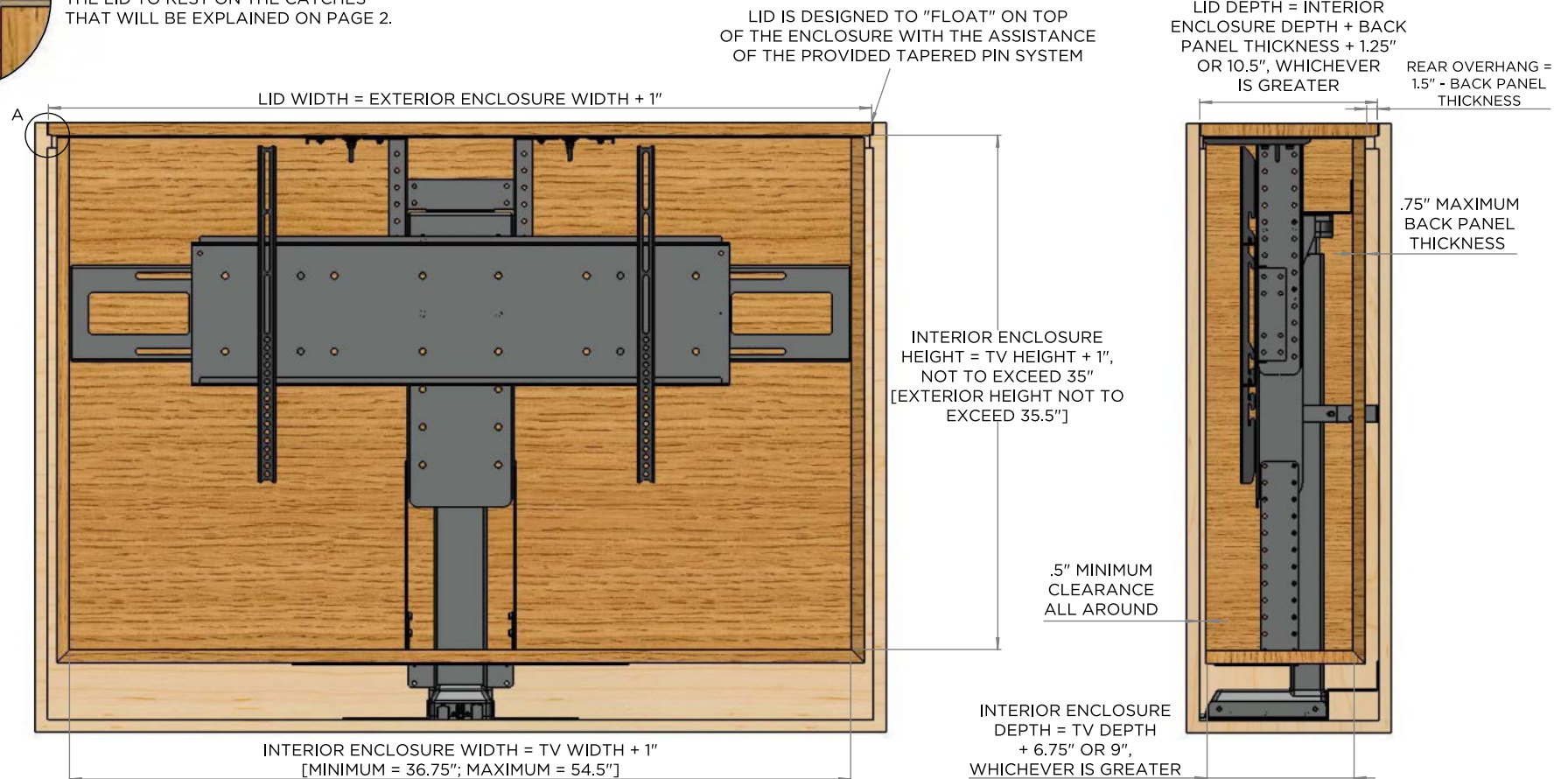


MODEL L-45ENS DIAGRAM INSTALLATION GUIDE PAGE 1: ENCLOSURE DIMENSIONS



DETAIL A: LID SHOULD OVERHANG ENCLOSURE BY AT LEAST .5" ON THE FRONT, LEFT AND RIGHT SIDES. THIS WILL ALLOW THE LID TO REST ON THE CATCHES THAT WILL BE EXPLAINED ON PAGE 2.



FRONT VIEW
FRONT SIDE OF CABINET REMOVED TO SHOW DETAIL

RIGHT SIDE VIEW
PANEL REMOVED TO SHOW DETAIL

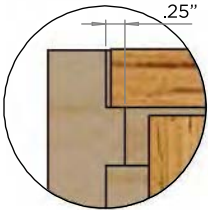
NOTES:

1. THE CABINET BOX SHOWN IN THE DIAGRAM IS FOR REFERENCE ONLY AND IS NOT PROVIDED WITH THE LIFT SYSTEM
2. FOR THIS LIFT MODEL, THE LENGTH OF ITS TRAVEL [EXTENSION LENGTH OR STROKE] IS 38"
3. FOR THIS LIFT MODEL, THE COMBINED WEIGHT OF THE TV, MOUNTED ENCLOSURE AND LID MUST NOT EXCEED 100 LBS
4. THE MOUNTED ENCLOSURE MUST HAVE VENTILATION CUTOUTS TO PREVENT OVERHEATING THE TELEVISION
5. THE LID MUST NOT BE FASTENED TO THE ENCLOSURE. THIS LID MUST REMAIN FLOATING FOR FINGER SAFETY.
6. HEIGHT OF THIS MODEL IS ADJUSTABLE IN 1/2" INCREMENTS UP TO 6" [MINIMUM HEIGHT = 32.25"; MAXIMUM HEIGHT = 38.75"]
7. A CUTOUT IN THE REAR PANEL OF THE ENCLOSURE IS REQUIRED TO UTILIZE THE REAR SUPPORT. SEE PAGE 3 FOR DETAILS.
8. WHEN DETERMINING TV HEIGHT, ALWAYS USE MANUFACTURER SUPPLIED "TV WITHOUT STAND" HEIGHT
9. LIFT MECHANISM IS POWDERCOATED BLACK STEEL. COLORS IN DIAGRAM ARE FOR CLARITY ONLY.

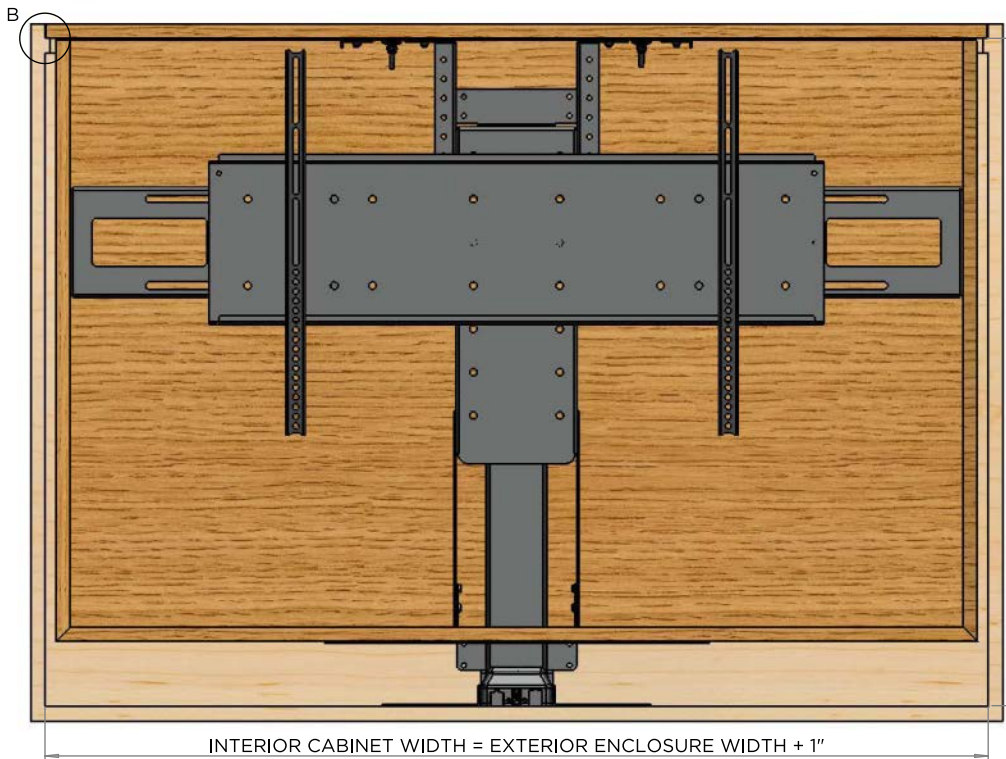
nexus²¹
CONCEALMENT SYSTEMS

COPYRIGHT 2015 - ALL RIGHTS RESERVED
UPDATED 12/23/15

MODEL L-45ENS DIAGRAM INSTALLATION GUIDE PAGE 2: CABINET DIMENSIONS



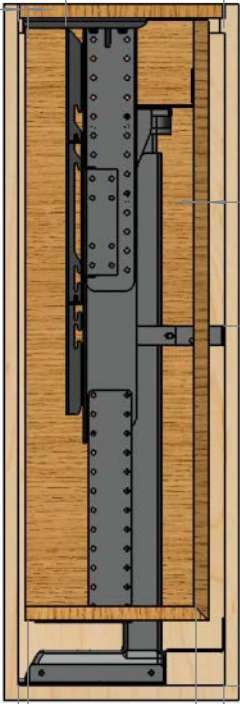
DETAIL B: INSTALL LID CATCH ALL AROUND. FLOATING LID WILL REST ON THESE CATCHES.



INTERIOR CABINET HEIGHT = ENCLOSURE HEIGHT + 2.5", NOT TO EXCEED 37"

.5" MINIMUM CLEARANCE ALL AROUND

BACK OF CABINET TO BACK OF TV = 8.22"



.75" MAXIMUM BACK PANEL THICKNESS

18.75" RECOMMENDED REAR SUPPORT HEIGHT

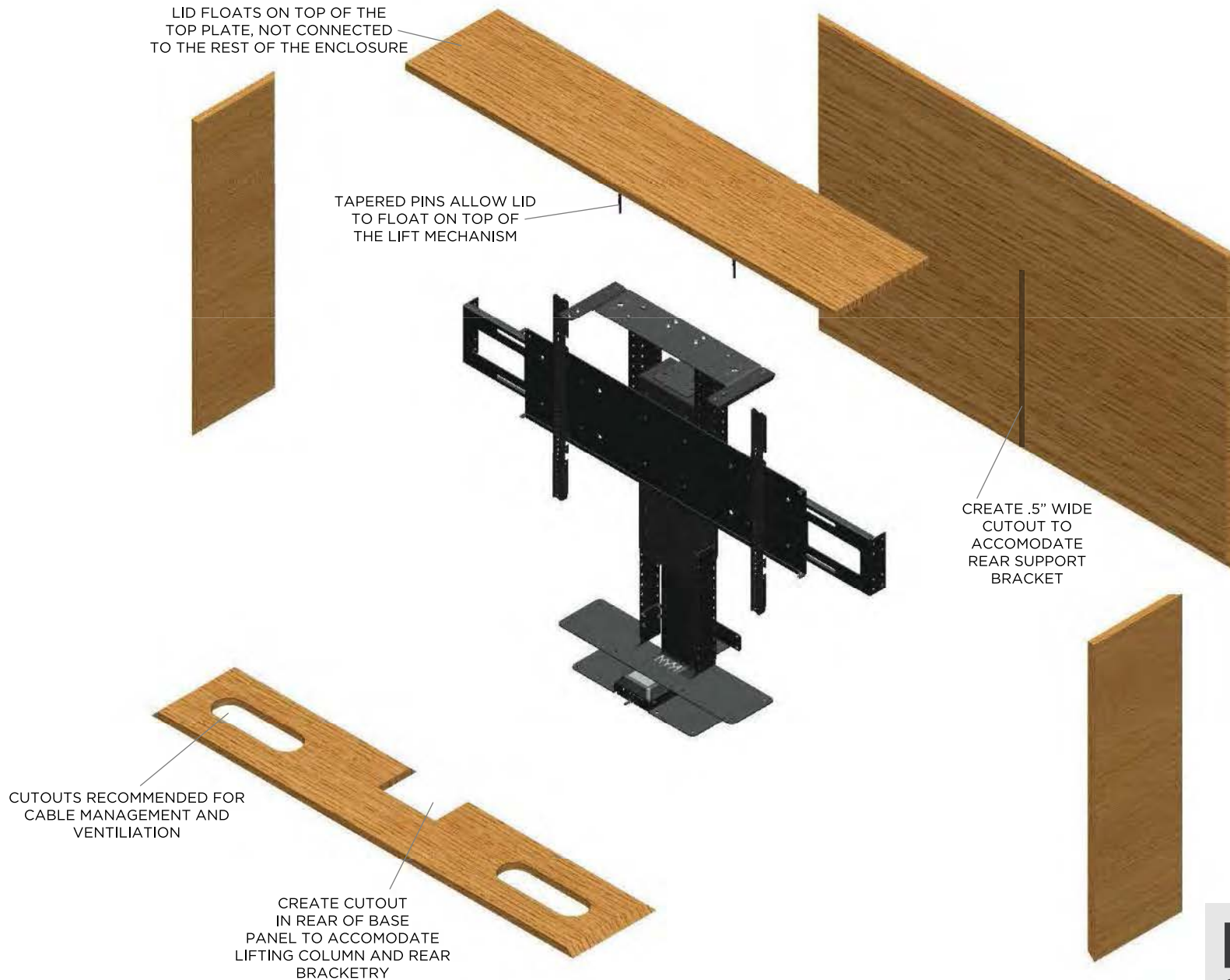
INTERIOR CABINET DEPTH = INTERIOR ENCLOSURE DEPTH + 2.5" OR 11.75" WHICHEVER IS GREATER

nexus²¹
CONCEALMENT SYSTEMS

COPYRIGHT 2015 - ALL RIGHTS RESERVED
UPDATED 12/23/15

MODEL L-45ENS DIAGRAM

INSTALLATION GUIDE PAGE 3: EXPLODED VIEW



nexus²¹
CONCEALMENT SYSTEMS

COPYRIGHT 2015 - ALL RIGHTS RESERVED
UPDATED 12/23/15

MODEL L-45ENS DIAGRAM

